

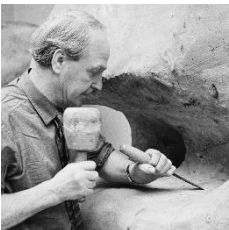
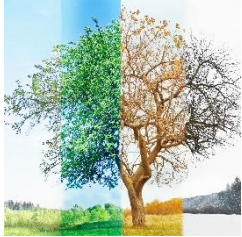


Year 1 Spring 2 Curriculum Newsletter

Dear Parents/Carers

Welcome back to school – we hope you have had a lovely half term break.

We have an exciting second half to the Spring term planned for Year 1. Our theme this term will be 'Growing'. As part of our topic, we will be planting and growing our own plants. The children will have the opportunity to explore a range of growing related themes. They will also be visiting the local library.



Subject Overview

English

This half-term we will be starting with a poem called 'When I am by Myself'. We will be looking at noun phrases, exciting adjectives, and metaphors. We also will be looking at rhyming couplets. Each lesson we will be sentence stacking to build our poems. We will then be writing a non-chronological report on 'seasons', we will be looking at the 'shape' of a non-chronological report which will help us learn the features that we need to include. We will be writing action sentences, similes and sentences using subordination (because).

Maths

The children learn how to count to and across 50, forwards and backwards, and will be counting in groups of 10. They will be partitioning numbers to 50 on a number line and estimating numbers to 50 on a number line. Next, we will be measuring and comparing length and height. We will also start to learn about capacity by comparing, measuring and solving capacity problems

RWI and Spelling

The children will be reviewing their sounds and learning new ones that they may have not come across before. They will have a daily session which will consist of daily reading and writing of words. During their daily Guided Reading session, children will have the opportunity to read, share, discuss and respond to a core text.

Science

In Science this half term we will continue exploring different habitats and the animals that live there. We will be creating our own food chains to understand the link between animals' habitats and their diets. During each lesson we also be taking measurements of our plants as we investigate what a plant needs to grow.

Geography

Children will develop global awareness by looking in detail at the position of the seven continents and five oceans of the world, understanding that the world is spherical and creating their own journeys across the world. Children continue to build on their map skills developed in the Autumn term using atlases, world maps and globes more widely.

Art

In Art Year 1 will be exploring the works of Paul Klee and Emma Burleigh. They will be learning that watercolour paint has special characteristics. We will use the elements of surprise and accident to help us create art. We will be developing our painting by reflecting upon what we see, and adding new lines and shapes to help develop imagery.

Computing

In Computing the children are going to using beebots to create different routes. They be learning how to use the different buttons on the beebot and will be creating a simple set of instructions.

Religious Education

The children will be focusing their work on the theme 'belonging'. They will be linking their work to the Christian festival - Easter. The children will be learning what happened during the Easter period and understanding that this is what Christians believe. They will be introduced to vocabulary such as Maundy Thursday, Easter Sunday and Palm Tuesday.

PE & Games

In PE the children will be focusing on invasion and attacking games. They will also be learning to ride a bike during cycling sessions. The children have PE on a **Tuesday**.

Music

During this half term, the children will explore the musical dimension of pitch. Using the story of Jack and the Beanstalk, we will use pitch to describe events and characters. Learning about the seasons, we will explore changes in pitch and respond to them with movements and vocal sounds.

Rewards

We give out golden stickers as learning rewards which lead to rainbow certificates and community coins are given when the children have shown a Wyvern value behaviour. At the end of each half term children vote for a reward decided by Student Council.

Home learning

Reading

We ask that children read each day for 10 minutes. Each child in Year 1 will be issued on a Friday with a level-appropriate reading book provided by school. It really helps their progress if they are heard regularly at home and we would be grateful if you could sign their Personal Log each time you hear them. Children may also read and listen to stories on the e-book library.

Spelling

The children will be set a new spelling list once a week. Their new lists will be stuck into their reading records. The children will be tested on their spellings the next week on Monday.

We find that a few minutes practise every day really helps the children to learn and remember their spelling patterns and rules.

Upcoming Events in Spring 2

- Thursday 6th March- World Book Day (dress-up and book swap)
- Friday, 21st March - Comic Relief Day (non-uniform)
- 4th March (Leopard), 5th March (Tiger), 11th March (Lion) – Library visits
- Tuesday 1st and Wednesday 2nd April- Parents evening.
- Friday, 4th April – end of term

BE THE BEST YOU CAN BE

Did you know we now have a Facebook page?

We have created a Facebook page which will show any news and events across the Viaduct Federation of schools, it is titled 'The Bushfield and Wyvern Viaduct Federation of Schools'. Like us and keep up to date with any fun school events and news!



Attendance Matters



Viaduct Federation of Schools



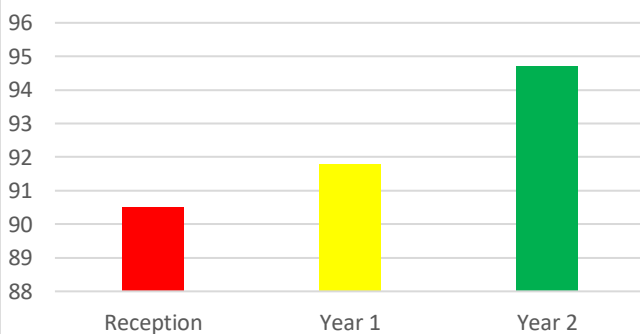
ATTENDANCE REVIEW

SPRING TERM

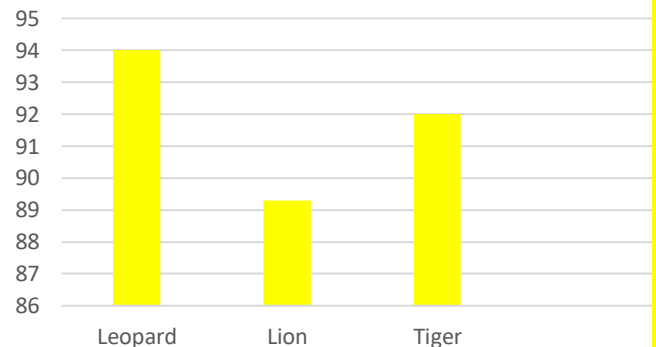
103 possible days this year

As you know, pupil attendance is very important and is a focus on schools from both the government and the local authority. In terms of our drive to raise awareness, please see below our classes' average attendance. Thank you for all of your efforts to get the children in everyday does make a difference. Please can we encourage you to keep it up for the summer term.

Whole School Attendance



Year 1 Attendance



<p>100% attendance</p> <p>72 days of learning</p> <p>0 days absent</p> <p>EXCELLENT</p> <p>High attendance leads to high achievement and a greater chance of success – Well done!</p>	<p>97% attendance</p> <p>70 days of learning</p> <p>2 days absent</p> <p>EXCELLENT</p> <p>High attendance leads to high achievement and a greater chance of success – Well done!</p>	<p>95% attendance</p> <p>68 days of learning</p> <p>4 days absent</p> <p>CONCERNING</p> <p>Poor attendance makes it harder to progress and limits opportunities for success</p>	<p>90% attendance</p> <p>65 days of learning</p> <p>7 days absent</p> <p>CONCERNING</p> <p>Poor attendance makes it harder to progress and limits opportunities for success</p>	<p>85% attendance</p> <p>61 days of learning</p> <p>11 days absent</p> <p>SERIOUS CONCERN</p> <p>Very poor attendance seriously impacts on education and reduces life chances!</p>	<p>80% attendance</p> <p>58 days of learning</p> <p>14 days absent</p> <p>SERIOUS CONCERN</p> <p>Very poor attendance seriously impacts on education and reduces life chances!</p>
--	---	--	--	---	---

Be the best you can be.